

## Hi! I'm Buddy the Mission Blue Butterfly and I live at the museum.

I spend my days flying around, looking for flowers to pollinate and meeting new friends. Follow the clues below to find me at my favorite spots at Bay Area Discovery Museum.

### Clue

**I like to fly high above a red bridge that lets vehicles and people cross the Bay. At the museum, you'll find me perched on a model of this same bridge.**

When you've found me, **compare** my perch to other areas at the museum. What spaces are taller? Shorter?

### Clue

**Sometimes I fly to explore the farthest reaches of the museum! You'll find me on the trail when you discover something large and made of metal that makes a big sound.**

Use your sense of hearing to listen to and **observe** what's around you. Can you guess what is making the sounds?

### Clue

**I look for flowers to find the nectar I eat. I went to look for flowers here, but only found stairs that look like tree trunks.**

Butterflies like me are endangered, which means there aren't very many of us and we need extra protection! Scientists are counting us in the wild. Practice your counting too - **count** the steps as you climb.

### Clue

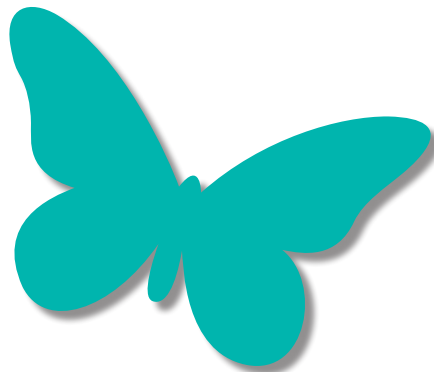
**I live in the wild, so I have to always look out for predators. This winged predator scared me when I first saw it – until I realized it was made out of tiles!**

Can you **estimate** how many tiles were used to make the mosaic of the bird?

If you **count**, was your estimate correct?

**Where did you find Buddy? Circle the spots on the map on the back where you found him!**

**Circle the spots on the map where you found Buddy!**



Bay Area  
Discovery  
Museum